

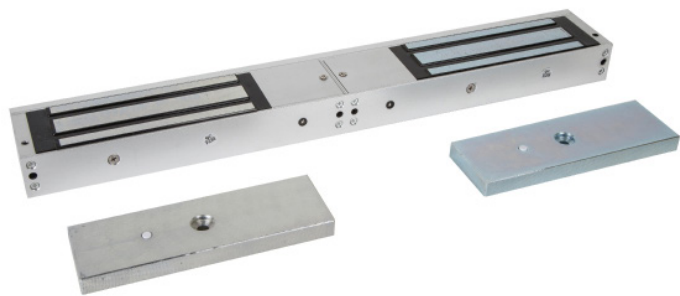


DOUBLE STANDARD MAGNETIC LOCK (1200LB)

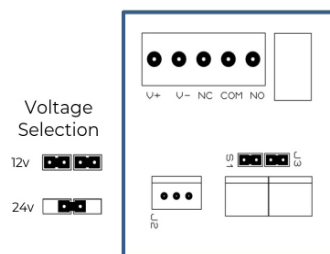
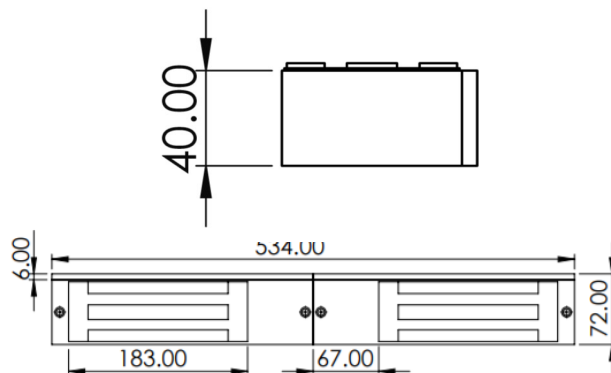
MAGNETIC LOCK

Fire tested range of maglocks and brackets from a market leader in access control.

FIRE TESTED to BSEN1634-1-2014 & BS476:Part22:1987 (30, 60, 90 & 120 min timber door-sets)



ML1200-D-M



ML1200-D-M

SPECIFICATION	FEATURES	OTHER PRODUCTS
---------------	----------	----------------

ML1200-D-M

- Aluminium housing
- 12/24 VDC @600/300mA x2
- 545kg (1200lb) holding force x2
- Built in surge protection
- Surface mount
- Fail safe operation (power to lock)
- +/- 15% voltage tolerance
- 10° to +50° operating temperature
- Push off release pin on armature
- Monitored
- Voltage free relay contacts

ML1200-D-M

- Fire rated (30, 60, 80 & 120 min timber door set)
- Standard magnet
- Clean and compact design
- No residual magnetism
- Status LED indication on ML1200-D-M (Red to Green)

Suitable Brackets/Housings:

- BK1200ZL (ZL bracket) x2
- BK1200L (L bracket) x2
- ADJ1200-L (Highly adjustable L) x2
- AH1200 (Armature housing) x2

EBCBWC02/DR 

EXTR02 

DIMENSIONS

ML1200-D-M

- 530x73x40 (mm)
- 185x60x15 (mm) Armature x2
- 8.54kg Boxed
- 5.58kg Unboxed

CONTENTS

ML1200-D-M

- Standard double magnet
- Armature plate x2
- 1200GB fixing kit x2
- Instructions
- Armature fixing template

ML600 

DU-GB/PTE 

